



# TÜV SÜD Premium Tire Mark 2025

PIRELLI  
CINTURATO WINTER 3

225/45 R17 94V XL

Test Period: February - March 2025

**Add value.  
Inspire trust.**

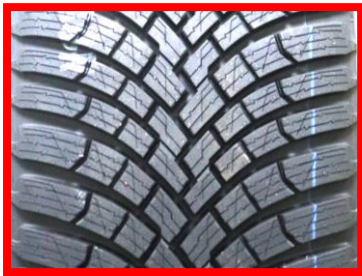
Report No. 713367367

# TÜV SÜD PS – PREMIUM TIRE MARK 2025

## TIRE DETAILS



### CANDIDATE



**PIRELLI  
CINTURATO WINTER 3**

DOT 93 4724

### COMPETITOR TIRES (in testing order)



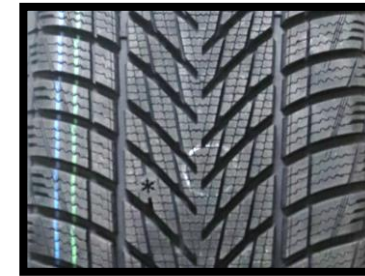
**BRIDGESTONE  
BLIZZAK 6**

DOT 16C 100UM2 1824-2124



**CONTINENTAL  
WINTERCONTACT  
TS 870**

DOT 16Y 03F9NR 3224-4924



**GOODYEAR  
ULTRAGRIP  
PERFORMANCE 3**

DOT 1DM7R VR1R 4524-5024



**MICHELIN  
ALPIN 7**

DOT 1HD8A 09JX 2324, 2424

- All Pirelli Cinturato Winter 3 test samples were provided for the tests by the customer.
- All other test samples were purchased in the normal market by TÜV SÜD.
- TÜV SÜD randomly selected the tires for the individual tests.

# TÜV SÜD PS – PREMIUM TIRE MARK 2025

## TEST DETAILS



### TEST LOCATIONS



- Wet, dry & rolling noise: Pirelli Vizzola (I)
- WGI Annex 5: TRIWO Pferdsfeld (D)
- WGI Annex 9: Neubiberg (D)
- Snow: Arctic Falls Indoor Two & Flex (S)
- Rolling resistance & highspeed test advanced: TÜV SÜD Product Service Garching (D)

### TEST VEHICLES



- VW Golf VIII 1.5TSI & 2.0TDI, VW Tiguan 2.0TDI (PBN)

### PROCEDURE & EVALUATION



- In most tests, the reference/control tire is tested repeatedly in the progress of the test to detect and consider changes of the ambient test parameters and correct its performance by linear interpolation.
- Generally, all tires in a test are primarily evaluated in relation to the reference/control tire.
- The performance is expressed as a percentage value, calculated on the basis of the measured and corrected test data.
- In this present evaluation, the performance of each tire is assessed relative to Pirelli Cinturato Winter 3 ( $\cong$  100%).
- In all evaluations, a percentage >100% means better and <100% means worse.

# TÜV SÜD PS – PREMIUM TIRE MARK 2025

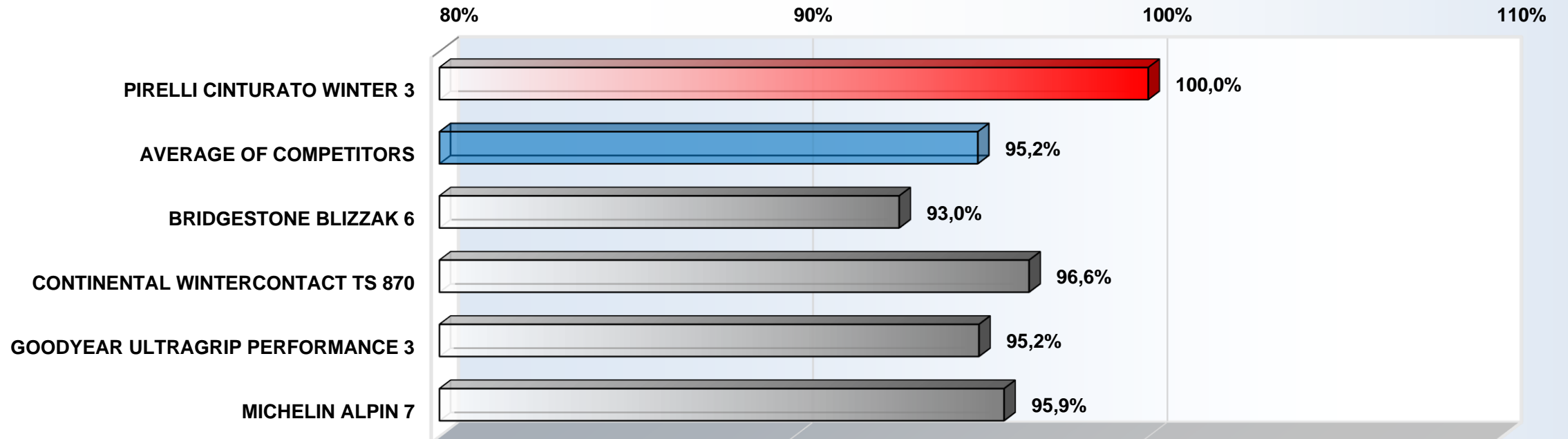
## TEST RESULTS



### ACCELERATION ON SNOW

- Acceleration on compressed snow with activated ETC (double execution)
- Result: Ø Acceleration time [s] from 10 to 35 km/h → Mean acceleration [m/s<sup>2</sup>]

### ACCELERATION ON SNOW PERFORMANCE \* [%]



\*) The calculation of the percentage performance is based on the mean acceleration values resulting from the measured acceleration times.

# TÜV SÜD PS – PREMIUM TIRE MARK 2025

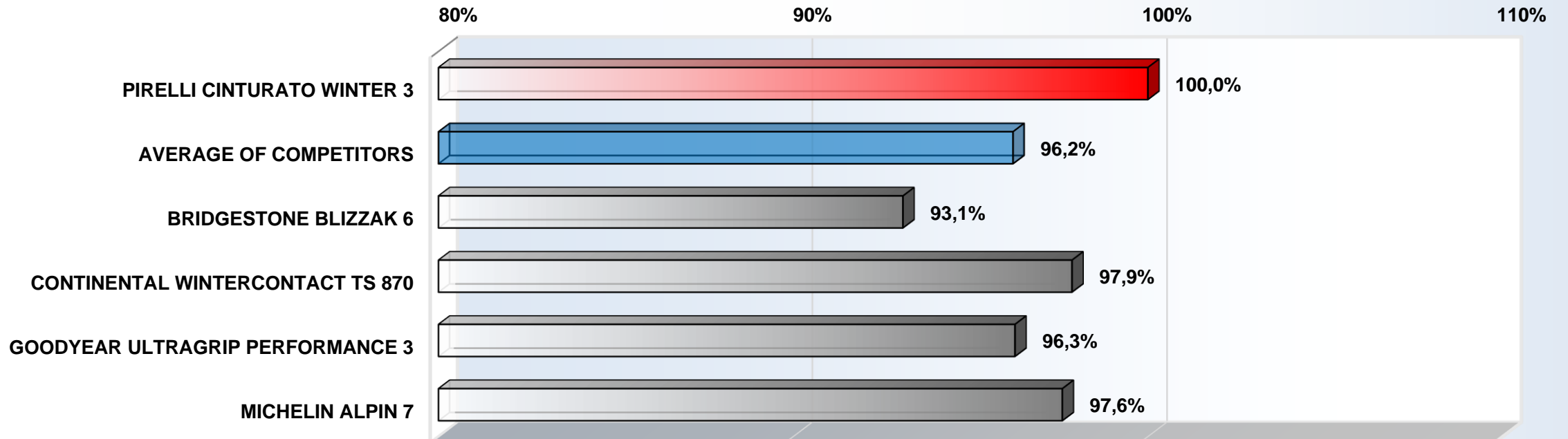
## TEST RESULTS



### BRAKING ON SNOW

- ABS-braking on compressed snow (double execution)
- Result: Ø Stopping distance [m] from 35 to 5 km/h → Mean deceleration [m/s<sup>2</sup>]

### BRAKING ON SNOW PERFORMANCE \* [%]



\*) The calculation of the percentage performance is based on the mean deceleration values resulting from the measured braking distances.

# TÜV SÜD PS – PREMIUM TIRE MARK 2025

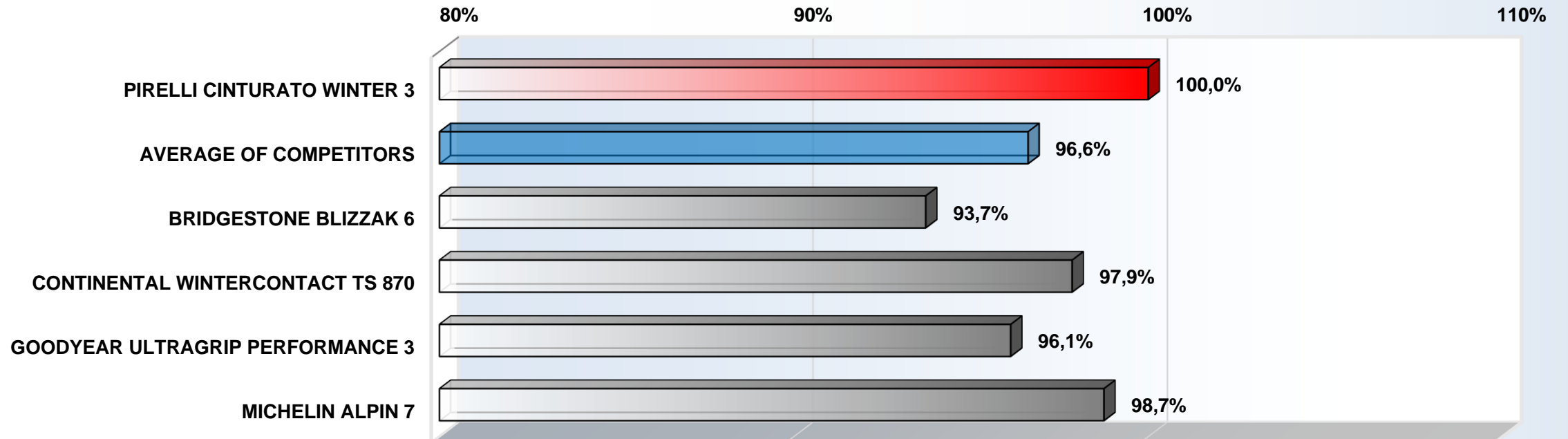
## TEST RESULTS



### HANDLING ON SNOW

- Subjective assessment and lap time on a snow handling circuit (track length: 640 m) (double execution)
- Result: Ø Rating (min. 1, max. 10) and Ø lap time [s] → average speed [km/h]; total result from speed and rating scores (2:1)

### HANDLING ON SNOW PERFORMANCE \* [%]



\*) The calculation of the percentage performance is based on the speed and the rating scores (at the ratio 2:1).

# TÜV SÜD PS – PREMIUM TIRE MARK 2025

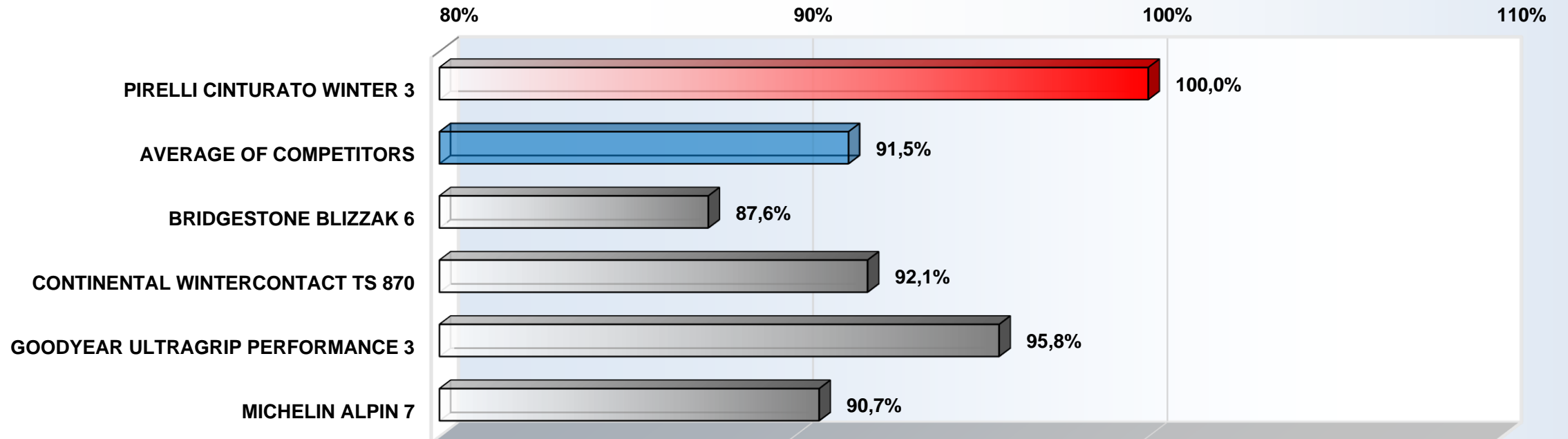
## TEST RESULTS



### AQUAPLANING STRAIGHT-LINE

- Objective measurement of longitudinal aquaplaning performance; water depth ~ 9 mm
- Result: Aquaplaning speed [km/h] at 15% slip

### AQUAPLANING PERFORMANCE \* [%]



\*) The calculation of the percentage performance is based on the measured aquaplaning speeds.

# TÜV SÜD PS – PREMIUM TIRE MARK 2025

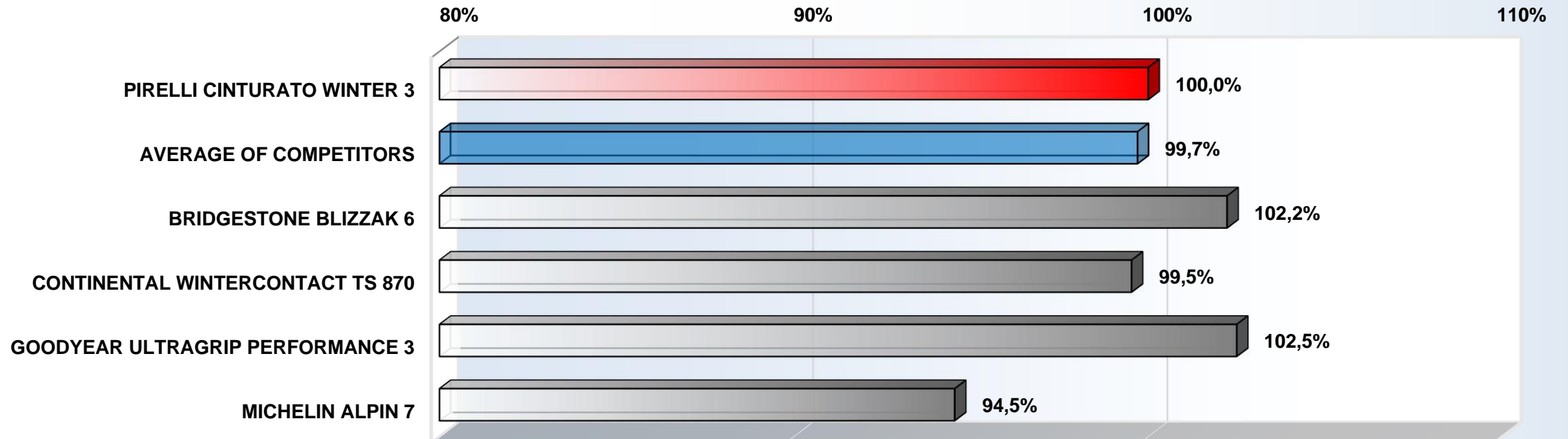
## TEST RESULTS



### WET BRAKING

- ABS-braking on wet asphalt surface
- Result: Ø Stopping distance [m] from 80 to 20 km/h → Mean deceleration [m/s<sup>2</sup>]

### WET BRAKING PERFORMANCE \* [%]



\*) The calculation of the percentage performance is based on the mean deceleration values resulting from the measured braking distances.



# TÜV SÜD PS – PREMIUM TIRE MARK 2025

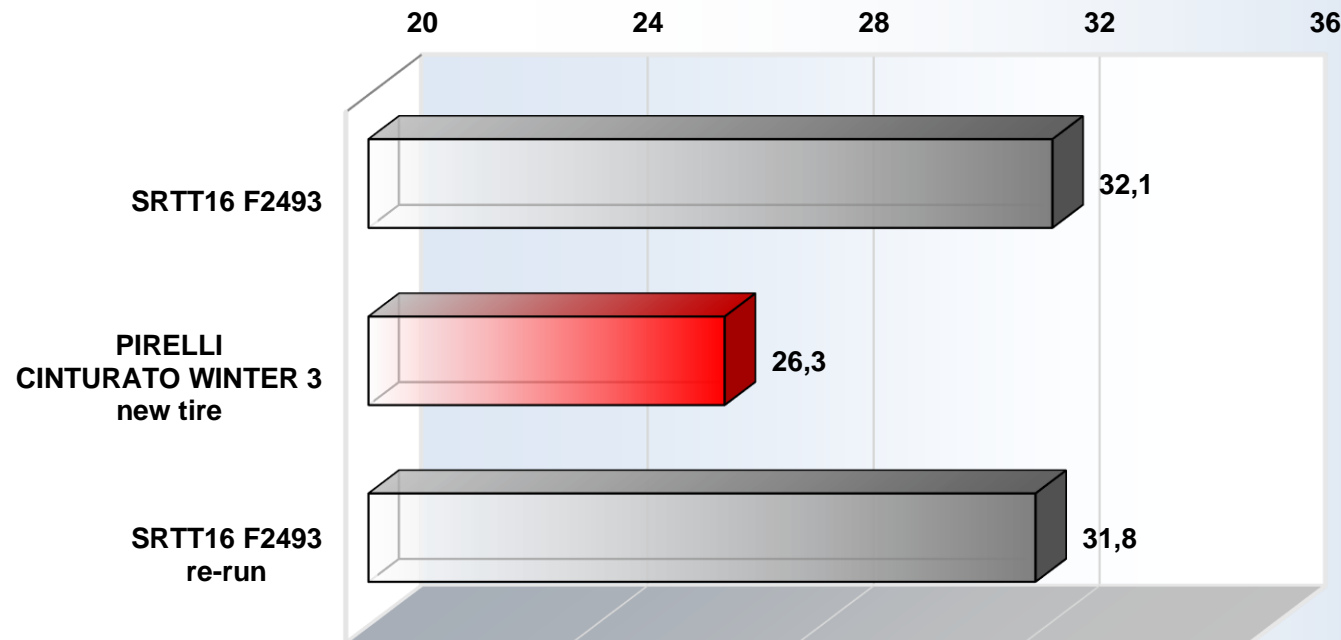
## TEST RESULTS



### WET GRIP INDEX (ECE R117 Annex 5) – new tire

- ABS-braking on wet asphalt surface acc. to ECE R117 Annex 5 – vehicle method
- Result: Ø Stopping distance [m] from 80 to 20 km/h → Mean deceleration [m/s<sup>2</sup>] → Wet Grip Index

#### STOPPING DISTANCE [m]



TIRE BRAND	T <sub>Air</sub> / T <sub>Surface</sub> [°C]		WET GRIP INDEX
SRTT16 F2493	5,2	8,0	-
PIRELLI CINTURATO WINTER 3 new tire	5,6	9,4	1,59
SRTT16 F2493 re-run	5,1	7,9	-

# TÜV SÜD PS – PREMIUM TIRE MARK 2025

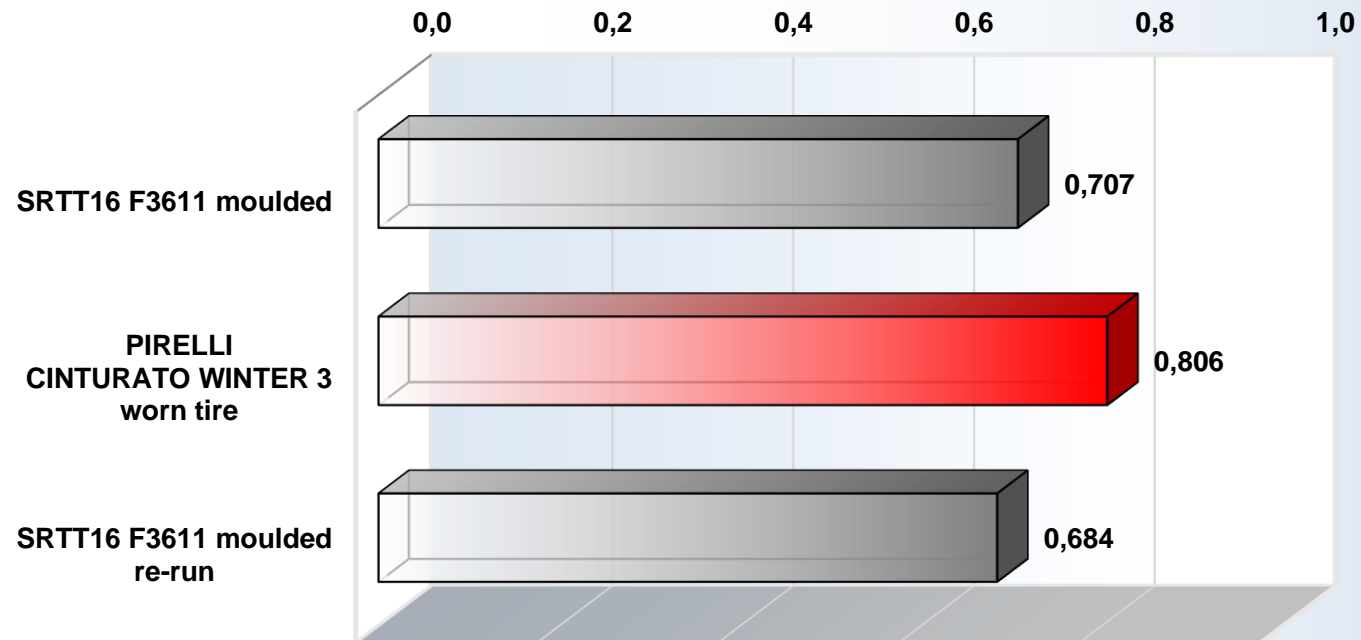
## TEST RESULTS



### WET GRIP INDEX (ECE R117 Annex 9) – worn tire

- Wet grip measurement acc. to ECE R117 Annex 9 – trailer method
- Result: Ø Peak braking force coefficient  $\mu_{\text{peak}}$  [-] → Wet Grip Index

### PEAK BRAKING FORCE COEFFICIENT $\mu_{\text{PEAK}}$ [-]



TIRE BRAND	T <sub>Air</sub> / T <sub>Surface</sub> [°C]		WET GRIP INDEX
	T <sub>Air</sub>	T <sub>Surface</sub>	
SRTT16 F3611 moulded	14,3	14,7	-
PIRELLI CINTURATO WINTER 3 worn tire	13,9	13,2	1,23
SRTT16 F3611 moulded re-run	13,7	12,7	-

# TÜV SÜD PS – PREMIUM TIRE MARK 2025

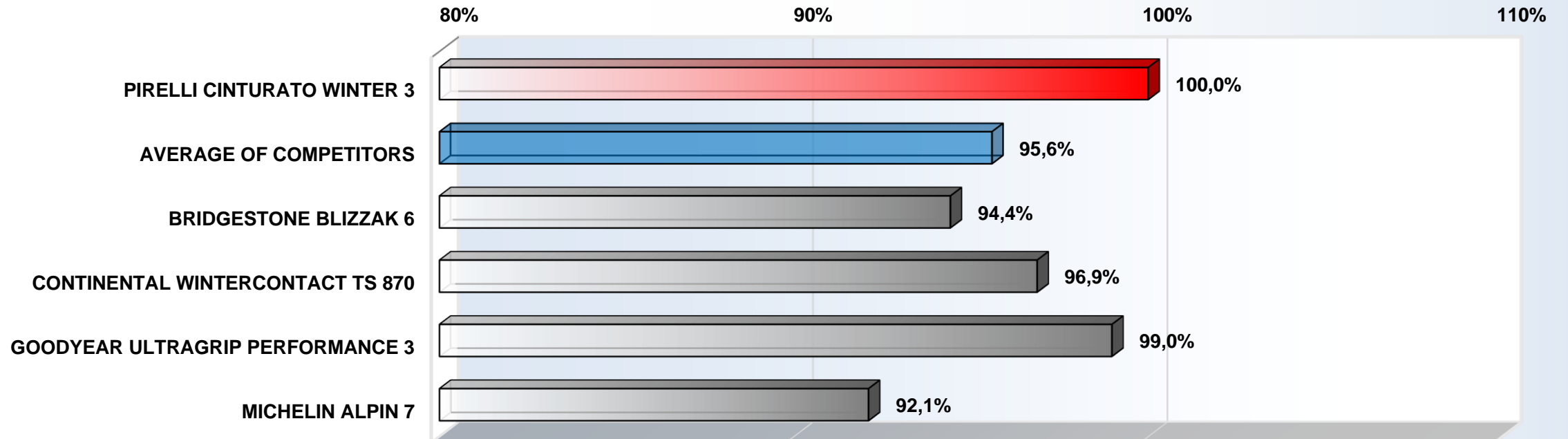
## TEST RESULTS



### WET HANDLING

- Subjective assessment and lap time on a wet handling circuit (track length: 1120 m)
- Result: Ø Rating (min. 1, max. 10) and Ø lap time [s] → average speed [km/h]; total result from speed and rating scores (2:1)

### WET HANDLING PERFORMANCE \* [%]



\*) The calculation of the percentage performance is based on the speed and the rating scores (at the ratio 2:1).

# TÜV SÜD PS – PREMIUM TIRE MARK 2025

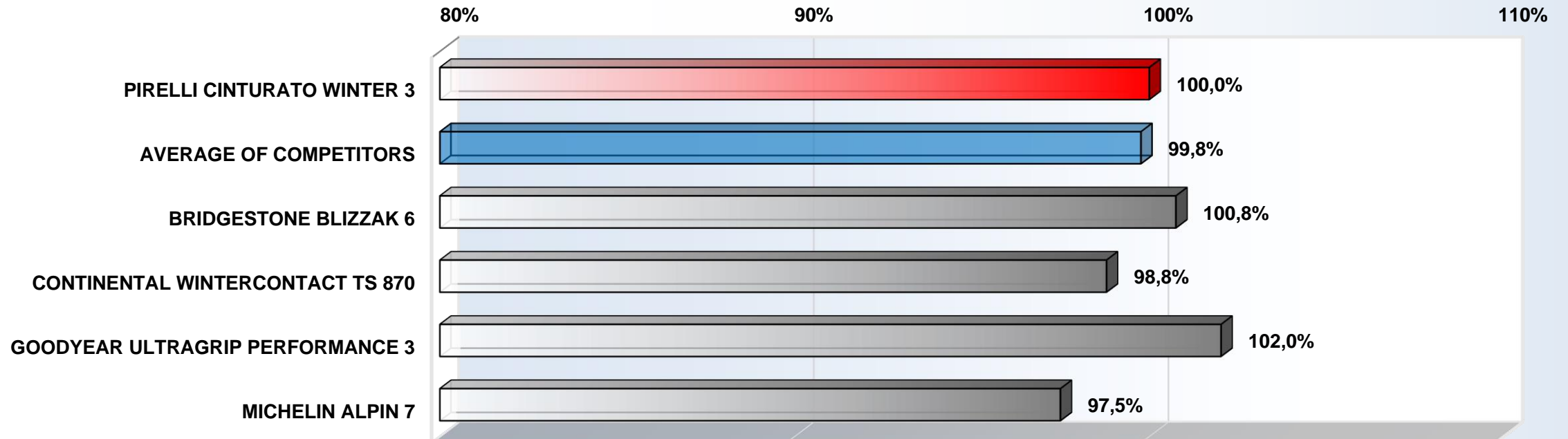
## TEST RESULTS



### DRY BRAKING

- ABS-braking on dry asphalt surface
- Result: Ø Stopping distance [m] from 100 to 0 km/h → Mean deceleration [m/s<sup>2</sup>]

### DRY BRAKING PERFORMANCE \* [%]



\*) The calculation of the percentage performance is based on the mean deceleration values resulting from the measured braking distances.

# TÜV SÜD PS – PREMIUM TIRE MARK 2025

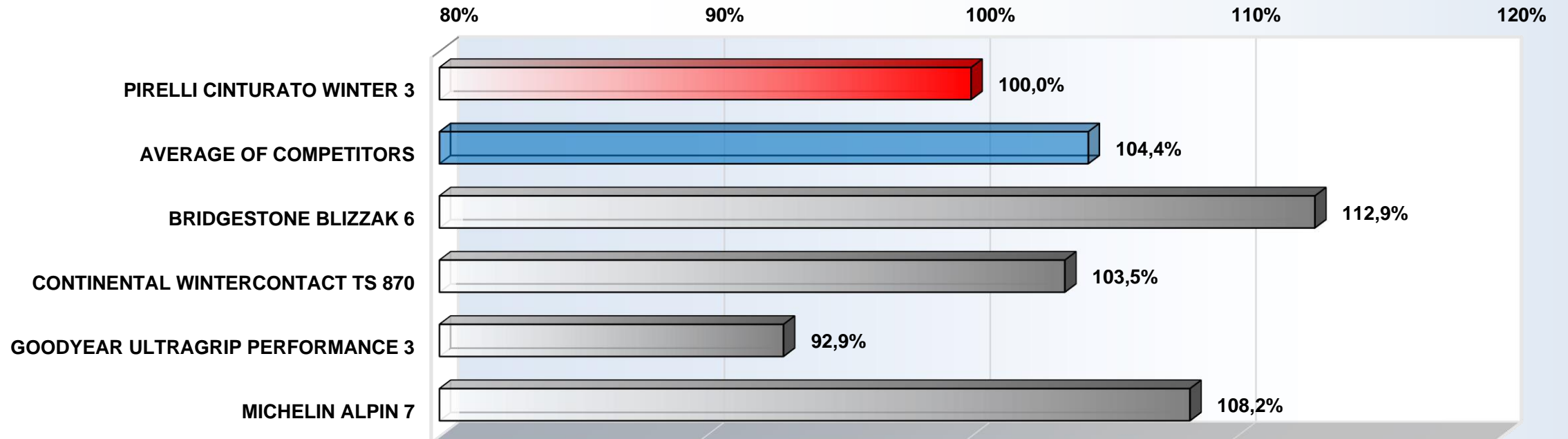
## TEST RESULTS



### ROLLING RESISTANCE (ECE R117 Annex 6)

- Acc. to ECE R117 Annex 6
- Result: Rolling resistance coefficient ( $c_R$ ) EU label value [kg/t]

### ROLLING RESISTANCE PERFORMANCE \* [%]



\*) The calculation of the percentage performance is based on the reciprocal values of the measured rolling resistance forces.

# TÜV SÜD PS – PREMIUM TIRE MARK 2025

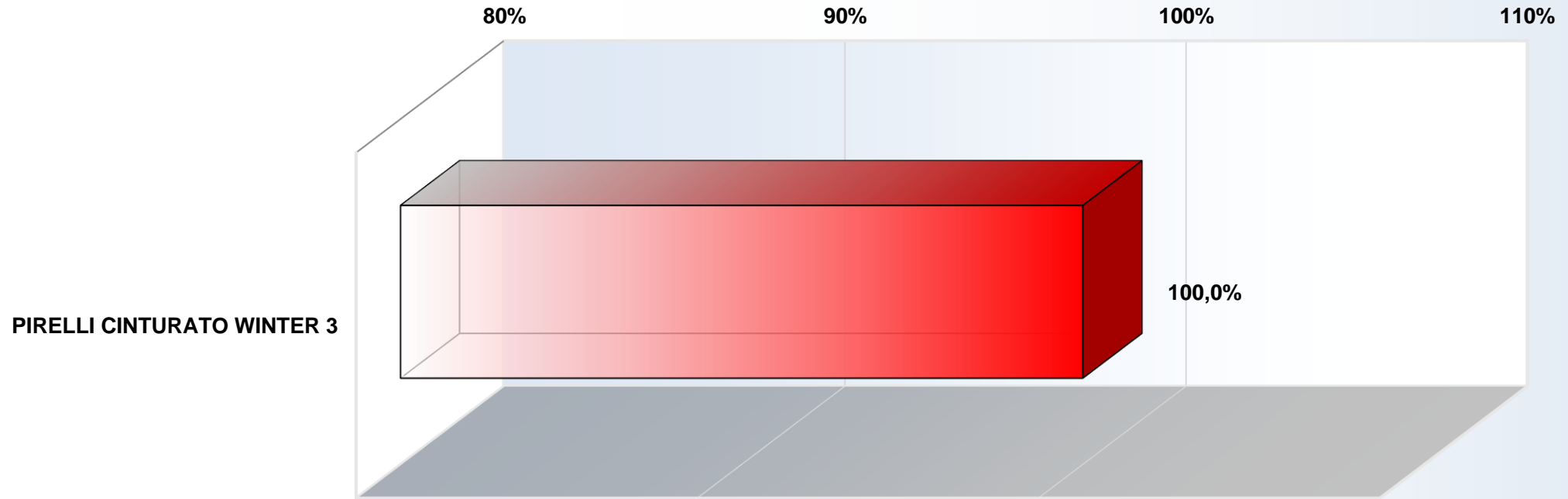
## TEST RESULTS



### HIGHSPEED TEST ADVANCED

- Acc. to ECE R30 + extension at 2° camber at  $v_{max}$  for max. 60 min
- Result: Total running time without visible defect (max. 120 min  $\cong$  100%)

### HIGHSPEED PERFORMANCE \* [%]



\*) The calculation of the percentage performance is based on the total running time without defect.

# TÜV SÜD PS – PREMIUM TIRE MARK 2025

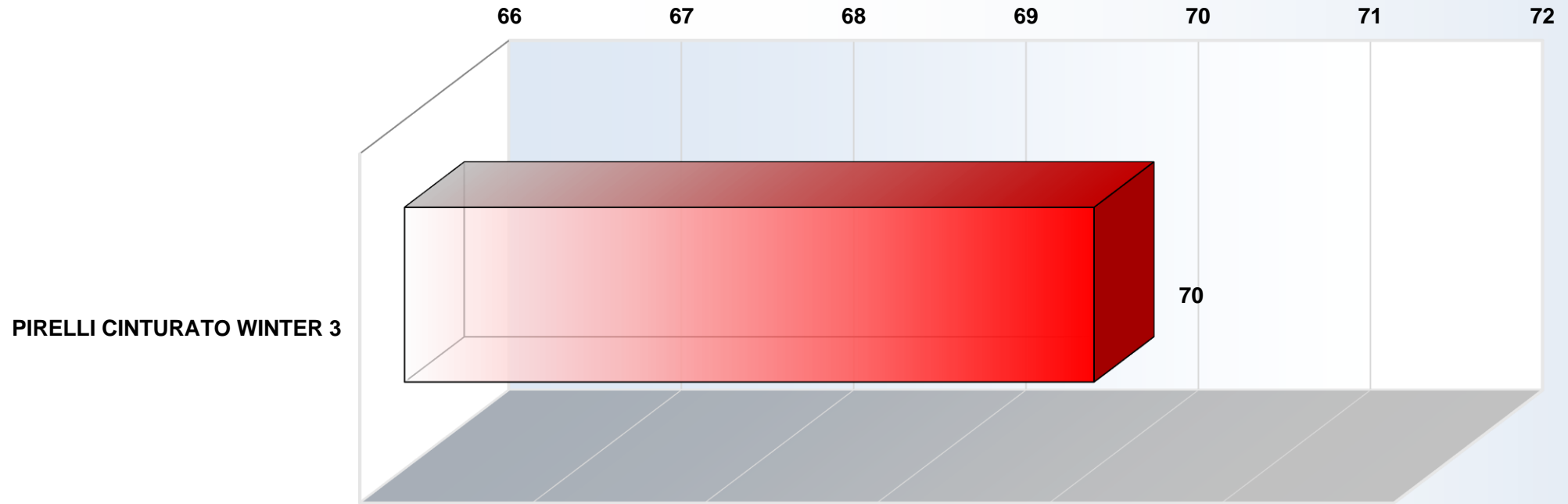
## TEST RESULTS



### ROLLING NOISE (ECE R117 Annex 3)

- Acc. to ECE R117 Annex 3
- Result: Rolling noise level (EU label value) [dB(A)]

### ROLLING NOISE (EU label value) [dB(A)]



# TÜV SÜD PS – PREMIUM TIRE MARK 2025

## SUMMARY OF RESULTS

Percentage > 100% means better, percentage < 100% means worse.	PIRELLI CINTURATO WINTER 3	BRIDGESTONE BLIZZAK 6	CONTINENTAL WINTERCONTACT TS 870	GOODYEAR ULTRAGRIP PERFORMANCE 3	MICHELIN ALPIN 7
<b>ACCELERATION ON SNOW</b>	100,0%	93,0%	96,6%	95,2%	95,9%
<b>BRAKING ON SNOW</b>	100,0%	93,1%	97,9%	96,3%	97,6%
<b>HANDLING ON SNOW</b>	100,0%	93,7%	97,9%	96,1%	98,7%
<b>AQUAPLANING STRAIGHT-LINE</b>	100,0%	87,6%	92,1%	95,8%	90,7%
<b>WET BRAKING</b>	100,0%	102,2%	99,5%	102,5%	94,5%
<b>WET GRIP INDEX (ECE R117 Annex 5) - new</b>	1,59	-	-	-	-
<b>WET GRIP INDEX (ECE R117 Annex 9) - worn</b>	1,23	-	-	-	-
<b>WET HANDLING</b>	100,0%	94,4%	96,9%	99,0%	92,1%
<b>DRY BRAKING</b>	100,0%	100,8%	98,8%	102,0%	97,5%
<b>ROLLING RESISTANCE (ECE R117 Annex 6)</b>	100,0%	112,9%	103,5%	92,9%	108,2%
<b>HIGHSPEED TEST ADVANCED</b>	100,0%	-	-	-	-
<b>ROLLING NOISE (ECE R117 Annex 3)</b>	70 dB(A)	-	-	-	-

